

CLUB HOMES AT THE PRESERVE FIRST ADDITION

APT. OWN. NO. 11
SUNDOWN CONDOMINIUM
FORSYTH SECTION

COND ADDITION

INSET

OUTLOT F

OUTLOT E

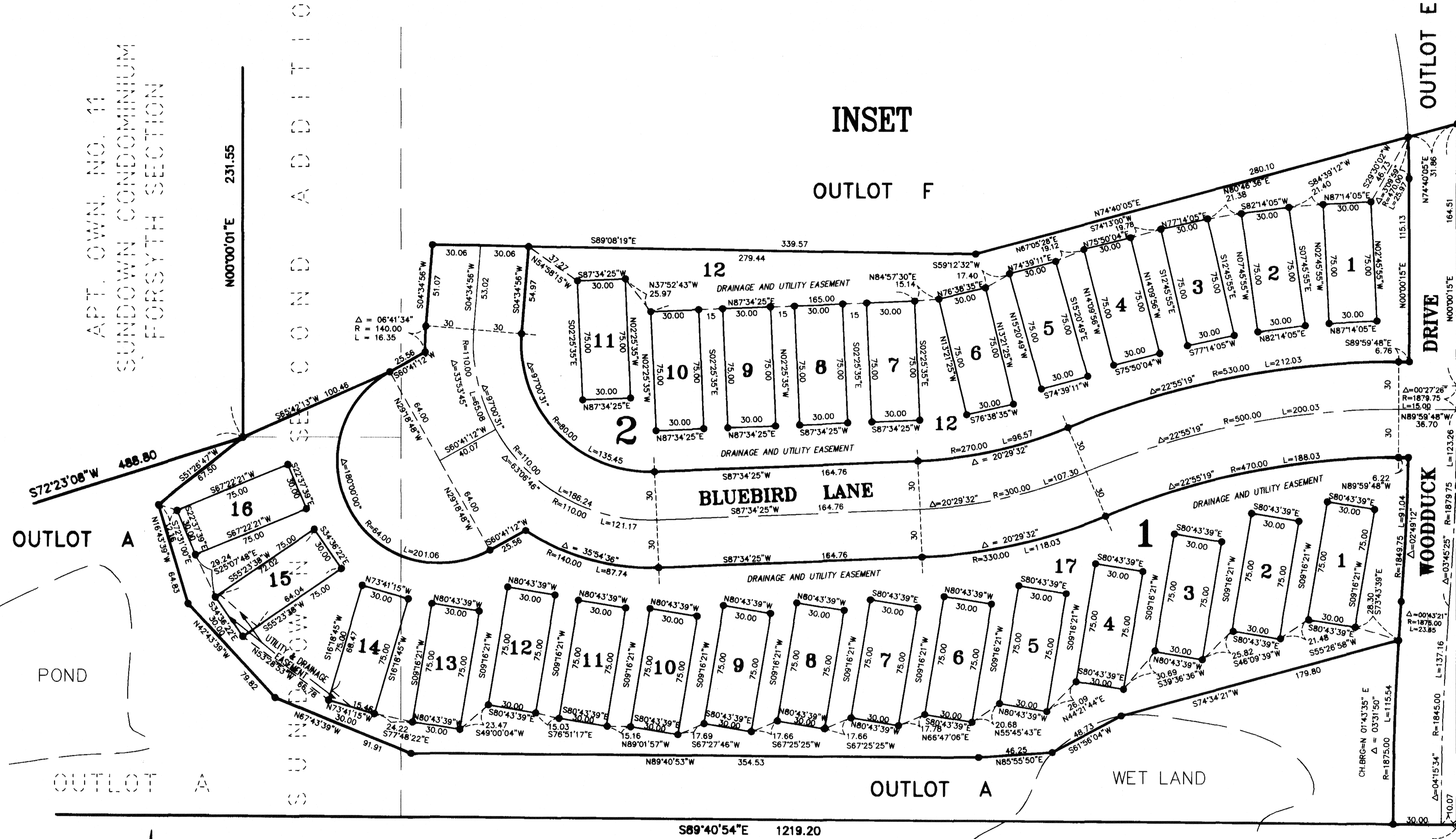
DRIVE

WOODDUCK DRIVE

WOODDUCK DRIVE

VILLAGE

TAMARACK



OUTLOT A

POND

OUTLOT A

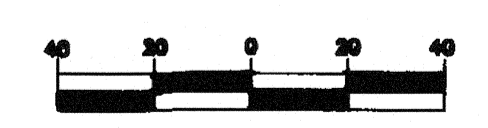
OUTLOT A

WET LAND

P R E S E R V E

FOR THE PURPOSES OF THIS SURVEY THE EAST LINE OF THE SE 1/4 OF THE NE 1/4 OF SEC. 5, T. 28, R. 21 HAS AN ASSUMED BEARING OF N 00°00'15" E.

GRAPHIC SCALE



(IN FEET)
1 inch = 40 feet.

UTILITY AND DRAINAGE EASEMENTS COVER LOT 12, BLOCK 2 AND LOT 17, BLOCK 1 ENTIRELY.

○ DENOTES 1/2 INCH BY 14 INCH IRON PIPE MONUMENT FOUND AND MARKED BY REGISTRATION NO. 10938.

● DENOTES 1/2 INCH BY 14 INCH IRON PIPE MONUMENT MARKED BY REGISTRATION NO. 10938. THESE MONUMENTS WILL BE PLACED IN THE GROUND AS SHOWN WITHIN ONE YEAR AFTER THE RECORDING DATE OF THIS PLAT.

FOUND WASHINGTON COUNTY CAST IRON MONUMENT E1/4 CORNER SECTION 5, T.28, R.21

McCOMBS FRANK ROOS ASSOCIATES, INC.
ENGINEERS AND SURVEYORS